

Partner  
for  
your  
success



**JAHN**

GmbH

Umform- und Zerspanungstechnik



### Plant 1

Triftstraße 1a  
Administration and  
CNC-machining



### Plant 2

Triftstraße 1a  
Grease nipple production  
Tool and device shop



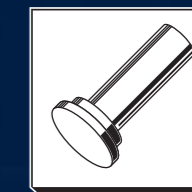
### Plant 3

Im Grund 5  
Impact extrusion  
CNC-machining  
Cleaning and  
shipping department



### Plant 4

Bahnhofstraße 10/1  
System production



**JAHN**

GmbH Umform- und  
Zerspanungstechnik

Business managers Mr. Dieter and Mr. Andreas Jahn

## JAHN GmbH

is a family company located in Thuringia. Managing partners are Mr Dieter Jahn and Mr Andreas Jahn.

The markets of the world are in change:

Competent responses for the challenge of global competition will be searched. Jahn GmbH owns those replies.

Jahn founded in 1993 looks back on long-time tradition of successful development and production of technical impact extrusion parts, hundreds of components, systems and assembly groups predominantly for the automotive industry, electrical industry and engineering.

Due to the high production depth caused by the combination of impact extrusion, CNC-machining, various metal forming processes and the manufacturing of systems and assembly groups Jahn presents itself as pan-European unique production combination and organisation. Jahn distinguishes itself mainly through high technical know how, innovative developments and close partnerships with customers.

Investments in most modern technique and the combination of consequent leading and trustful cooperation of our workers and clerks are important for the successful development of our company.



# JAHN GmbH Umform- und Zerspanungstechnik

target group of customers:

automotive industry, electrical industry, pyrotechnics, engineering, grease technique

equipment:

- several toggle lever presses up to 1200 tons press power
- extensive equipment for post-machining of technical impact extrusion parts and profile material
- more than 50 turning automats for grease nipple production
- more than 60 most modern CNC turning and machining centres for post and finish machining of technical impact extrusion parts and profiles
- production of systems and assembly groups on most modern machines and equipment
- most modern washing automates for degreasing of all products
- most modern measuring machines and inspection technic

specialisation:

- capable development and design department
- own tool, machine and device shop with experienced experts as base for quick and effective solutions especially related to the development of customised productions up to series production readiness
- own department for continuous education and training of 20 trainees

employee:

480

year of foundation:

1993 (with 24 employee)

sales market:

worldwide

awards:

- 2000 Laureate of Oscar for the middle class
- 2000 Entrepreneur of the year – finalist
- 2001 Entrepreneur of the year – finalist
- 2001 Europes 500
- 2002 Europes 500
- 2006 Europes 500 – Entrepreneur for growth
- 2007 Honorary badge of the Oskar Patzelt foundation
- 2007 Grand award of the middle class "Premier" nomination

quality certification:

accordingly IATF, ISO/ TS 16949:2002



## Company portrait

## Quality

starts with the consulting of our customers, it continues in our operating processes and guarantees that our products will be supplied in good quality and technical conforming condition to our customers worldwide.

## Quality

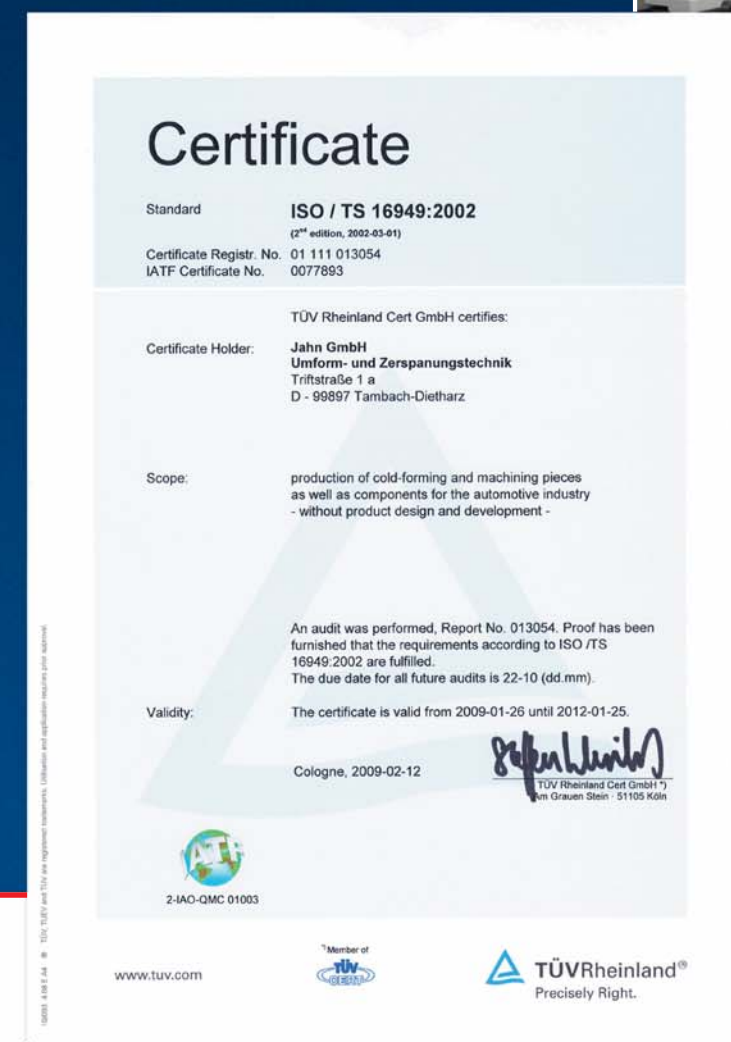
is a main objective in our production organisation. Only products of high quality should be linked with the company name of Jahn.



complex measuring and inspection machine



measuring station of most modern generation



## Quality

is the fulfilment of requirements for highest customer satisfaction and therewith pre-condition for our success.

Our most modern equipped measuring laboratories are able to proceed with simple as well as with complicated measurements on initial samples and serial parts.

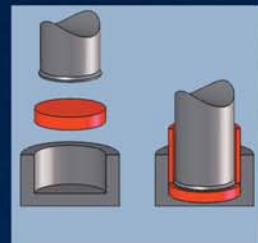
## Quality assurance



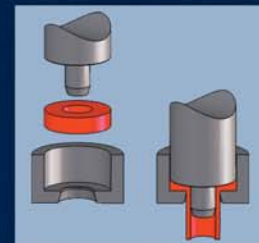
## Our production

Smooth production processes by means of high-performance and most modern toggle lever presses allow our company to produce complicated impact extrusion parts with high deforming degree in continuous quality. All product units are integrated in a certified quality assurance system.

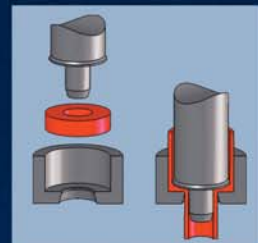
The whole production is equipped with most modern machines and equipment. The high production depth, the huge product range and the high technological know how of our employee allow our customers to purchase products from impact extrusion blankets to complete systems from one source, without loop ways.



backwards  
impact extrusion



forward  
impact extrusion



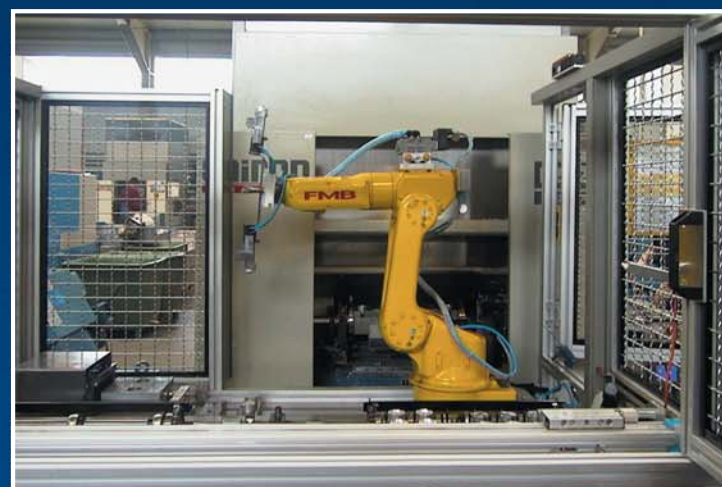
combined  
impact extrusion



impact extrusion on toggle lever press

## Impact extrusion, stamping, deforming

On toggle lever presses with press capacities of 200 to 1200 kN impact extrusion parts from aluminium and aluminium alloys in a dimension range of diameter 10 to 120 mm and a total length of 360 mm are produced. Eccentric presses and round cycle forming machines allow additional technological machining steps. The advantageous tooling costs, high tool life, high deforming degree and low material loss are important economic advantages.



CNC-milling and machining centres

## CNC-machining

More than 50 CNC-machining centres and CNC-turning machines are the base for further machining of impact extruded parts and profile material of aluminium in various shape for low and high volume series. 50 % of these modern machines will be operated with robots with corresponding high productivity. Special trained personnel for set up and programming guarantees a work load in three shift model.

## Cleaning (Degreasing)

All produced parts will be cleaned in high quality on modern and effective washing machines. With the cleaning method we use we guarantee smooth proceeding of following machining steps such as final assembly, welding, brazing et cetera at customer facility.



washing automat

## System production

Since 2007 Jahn produces in a new production plant with most modern equipment for assembly, completion and complete production systems and assembly groups for the automotive and non-automotive industry.



assembly automat

production line for  
system production  
and assembly groups



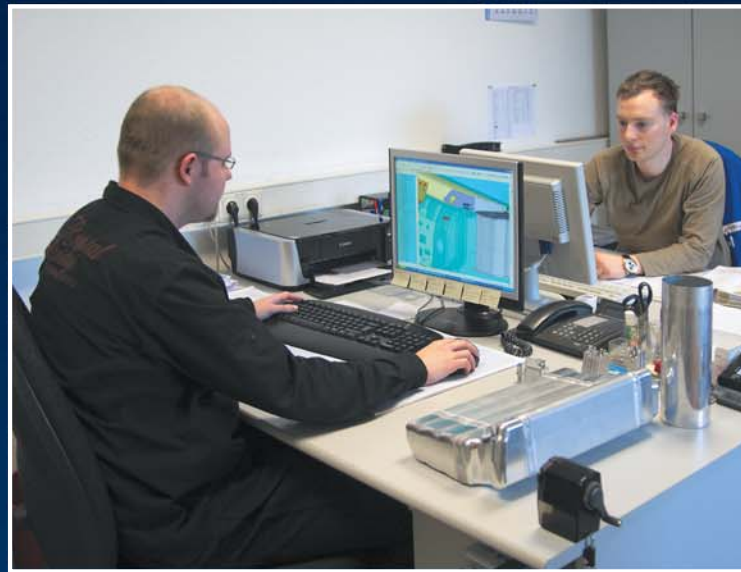
## Our production



## Research and development

have high importance at Jahn. Our products will be utilised in many applications worldwide.

We develop also together with our customers new domains for innovative aluminium impact extrusion parts with high economical effects. Excellent educated graduate engineers support our customers already at product development stage by application-technological consulting and optimisation of customer specified products. In the



CAD workplace



tool and device shop

foreground stands thereby the development and production of customised products with high economical effects such as:

- low weight of the aluminium parts compared with steel
- high deforming degree in impact extrusion
- low tooling costs
- homogeneous structure and advantageous fibre flow
- good opportunities for surface treatment
- recycling possibility



JAHN has a capable tool, device and machine shop. Highly qualified professionals manufacture here tools for deforming process, new products, devices, machines and equipment for our own needs within shortest time.

## Examples from development

Impact extruded air bottles from aluminium EN-AW 6060/ 6082, braking and clutch systems for automotive industry and various other applications. Cost effective production, especially through impact extrusion of the air tanks, homogenous structure and advantageous fibre flow.

Versions with asymmetrical crosscut are part of our product range as well. Air bottles have the CE conformity accordingly air bottle directive.

Air receivers and air diffusers for optimisation of suspension comfort at utility vehicles.

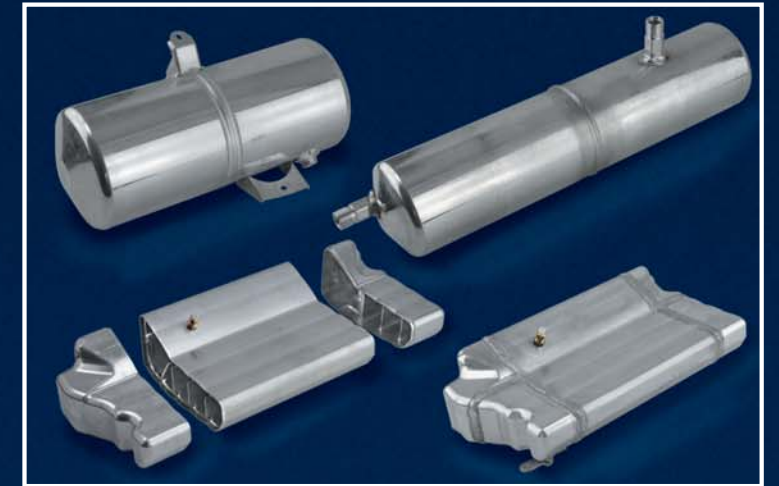
Air receivers and air diffusers for optimisation of suspension comfort at utility vehicles.

Air receivers and air diffusers for optimisation of suspension comfort at utility vehicles.

Receiver dryers, accumulators for climate systems in various designs.

Components for chassis suspension and transmission in different dimensions and designs for passenger cars and lorries.

Pump covers and housings for passenger cars fuel pumps in impact extruded design with finished machining.







## Products for innovative transmission

in impact extrusion –  
forward-looking solutions in aluminium

Extensive application possibilities:

By means of impact extrusion and variable design of the wall thicknesses pulleys can be aligned to different load situations in an optimal way, material and weight saving.

Advantages:

- low tooling costs
- geometry with high variation width
- homogenous material structure
- application orientated definition of resistance
- low weight
- saving of fuel
- recycleable
- individual design possibilities
- integration of components and functions, coggings, on-pressed axles, fittings and connection holes
- production possibilities maximal diameter 140 mm, tube and axle length up to 300 mm

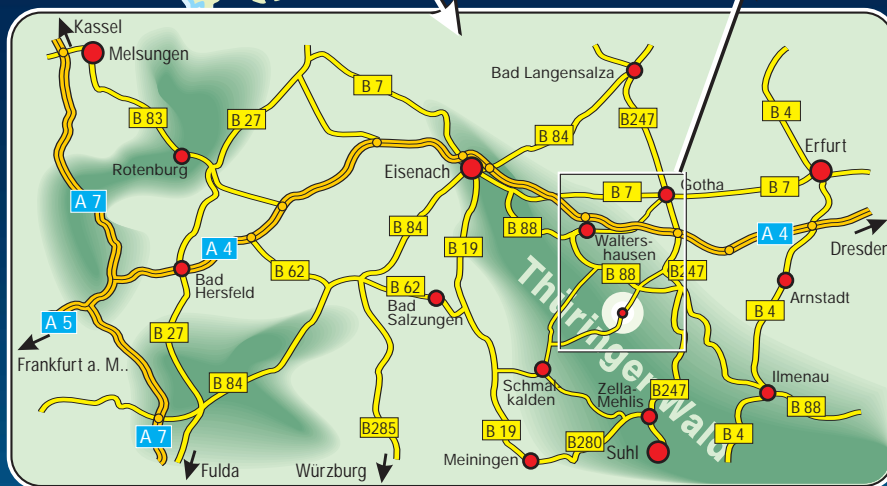


## Patents

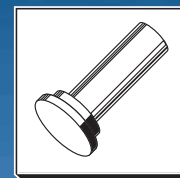
are part of the further development of our company. They are the result of the intensive work of our research and development department in close cooperation with our customers.



## Products for innovative transmission



# JAHN GmbH



Triftstraße 1a  
 D-99897 Tambach-Dietharz  
 Germany  
 phone: +49(0)3 62 52-4 64-0  
 fax: +49(0)3 62 52-4 64-16

Im Grund 5  
 D-99897 Tambach-Dietharz  
 Germany  
 phone: +49(0)3 62 52-4 60-60  
 fax: +49(0)3 62 52-4 60-69

Bahnhofstraße 10/1  
 D-99897 Tambach-Dietharz  
 Germany  
 phone: +49(0)3 62 52-4 60-884  
 fax: +49(0)3 62 52-4 60-885

Internet: [www.jahngmbh.de](http://www.jahngmbh.de) E-mail: [info@jahngmbh.de](mailto:info@jahngmbh.de)